

StreamMagic

Set-up guide

What is a NAS drive...?

Setting up a NAS drive allows your digital music to be played through the Stream Magic product, even if your computer isn't switched on.

A NAS (Network Attached Storage) drive is essentially a hard disk drive with a built in network interface. As the term indicates, NAS drives are used for data storage. You can share music, photos, movies and your data with any network client (such as the Stream Magic product) on that particular network. The NAS drive acts as a UPnP server and is directly connected to the network via the router allowing the Stream Magic product to detect it in it's UPnP servers list/menu.

In this example we are going to set up a Western Digital MyBook NAS drive on a Windows XP computer. This will differ slightly from NAS drive to NAS drive, and from operating system to operating system (e.g. Mac, Windows 7). NAS manufacturers are aware of this and do provide a basic set-up guide for each operating system.

The supplied manufacturer software is intended to make the NAS drive easy to install and quick to access. However, if you don't wish to install the NAS software on your computer and know the name of the NAS you can type in "\\\" into the windows address bar followed by the NAS drive name, in the case of the MyBook it is simply '\\mybook'.



Firstly you will need to make sure that everything is properly connected before you can proceed correctly.



After this an initial set-up menu will appear on screen. For the 'MyBook' it is an application installer. There is a list of three options. You would need to select the first option, 'WD Discovery Tool'

StreamMagic

Set-up guide



Then by selecting 'MyBookWorld' you will then access the next set of options. Click **'Map Network Drive'** (Highlighted in red) in the **'Things To Do'** list.



You will need to map the network drive automatically so click 'Yes'.



When installing the NAS drive, if the Windows firewall at any time attempts to block the setup process, simply click unblock. This will not damage, affect the security or affect the performance of the PC. It is standard protocol if the Firewall is turned on.

StreamMagic

Set-up guide

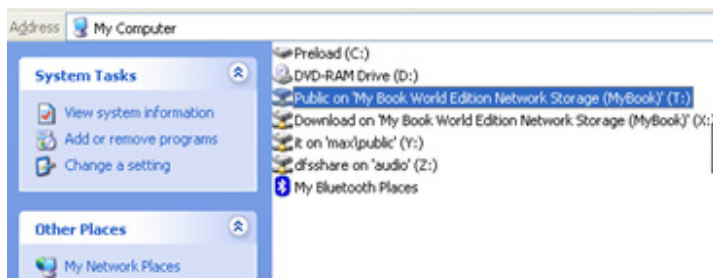


There are two drives. Public and Download. You can change what letter drive they are if you already have a 'Z' drive being used for example.

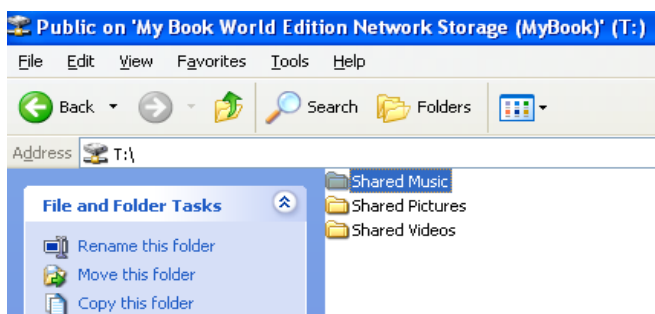
You can now close the WD Discovery installation window as the Western Digital utility is now installed on your computer.

To access the NAS drive from your computer...

Go to My Computer



Select and open the correct mapped network drive - in this case (T) drive which is the MyBook.

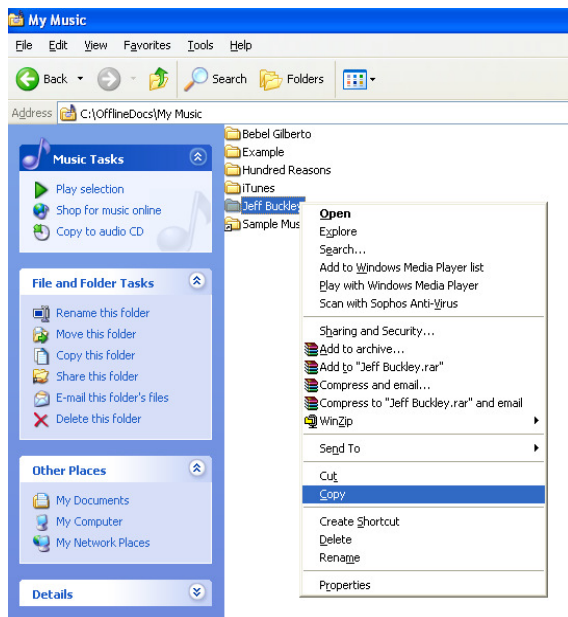


As this is your initial set up the folder will be empty. This is where the fun begins - putting music onto the NAS drive for the Stream Magic product to play. This is a very simple procedure. We will show you how easy it is. It is simply a 'copy and paste' job!

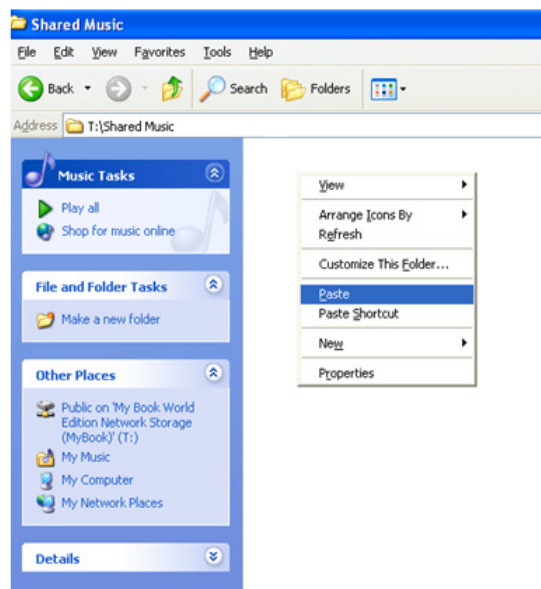
StreamMagic

Set-up guide

Loading music onto your NAS drive...



In your 'Music' folder on your computer select and copy the music that you wish to transfer to the NAS drive.



After your music has been selected to copy, you will need to go back to the MyBook music folder, (in our case that would be the T drive and then 'shared music'). When you are in the shared music folder simply right click to paste the album(s) or track(s) of your choice onto the NAS drive.

To enable UPnP playback from your NAS drive...

Most NAS drives support a built-in UPnP server that can automatically serve any content stored internally, so having a computer switched on is no longer necessary to play back your music.

To enable UPnP playback from your NAS, you will usually need to enter the NAS drives web configuration page and navigate its own set-up menu to 'enable media streaming' (or similar).

To enter the NAS drive's web configuration page, you can either use the dedicated NAS software that you may have installed when setting up your NAS to go straight to its login page.

Alternatively, if you know the IP address of your NAS drive (eg. 192.168.0.04), you can type this into your browser to take you to the NAS's web configuration login page.

Once you are in the NAS's web configuration page, you must navigate to 'enable media streaming' (or similar option) - please refer to your NAS user manual for precise details. Once this is enabled, the NAS drive will then appear under UPnP servers in the Stream Magic product's menu.

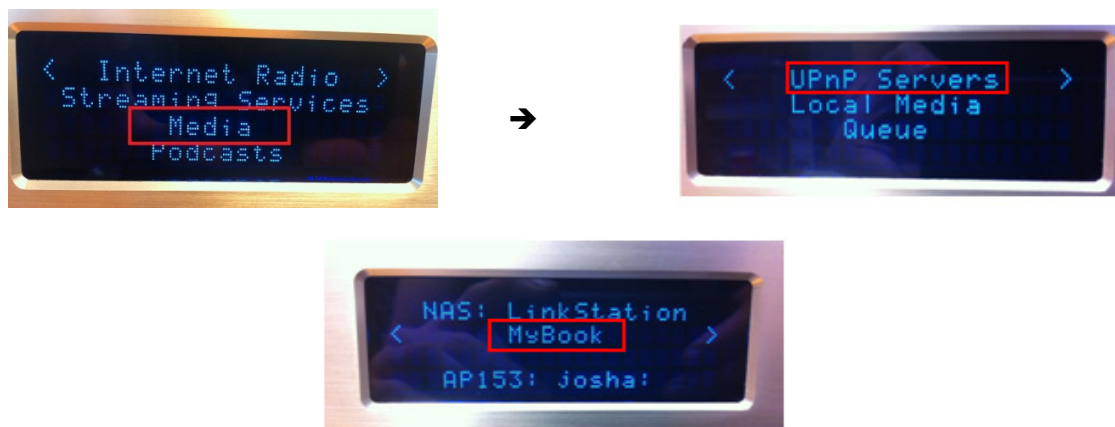
When you add new files to a NAS drive, the NAS's UPnP server/media server needs to refresh the Share folder's media content before it can see/share the new content. This is usually done automatically by the media server at a default refresh time which can be anything from 5 minutes to once a day, but for an instant library refresh you can Restart/Refresh the media server via its own web admin interface - see the operating instructions for your NAS drive for details. For large libraries this can take several minutes.

StreamMagic

Set-up guide

To access the NAS via the Stream Magic product...

Then follow the steps below on the Stream Magic product...



Once you have selected the NAS drive from the UPnP Servers menu, choose Music. There are then a number of options available to you. We are going to choose 'Artist' for the purpose of this example.



You can browse the contents of the NAS by using the Stream Magic product's remote control or front panel (shown here), or from the Stream Magic Remote application. How the NAS is browsed depends on the options that the NAS's UPnP server presents. For example, one UPnP server may give you the option to browse by 'artist'/'album' etc, but another may give you the option to browse by 'genre'- this entirely depends on the UPnP server/NAS drive being used to stream music.

If you have any further questions relating the set up of your NAS drive please contact your NAS drive manufacturer for more support. For any queries regarding the Stream Magic product please visit <http://support.cambridgeaudio.com> for more support.